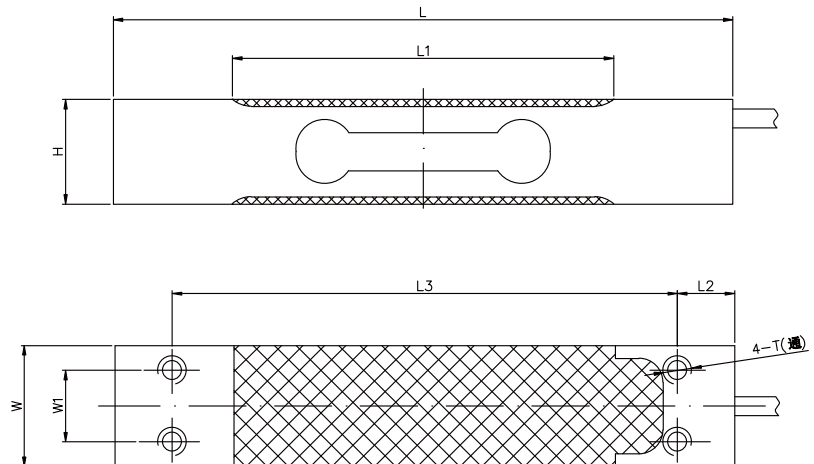
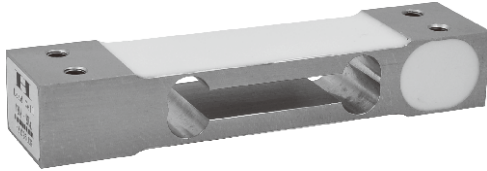


## ALUMINUM 铝合金



### 尺寸 DIMENSIONS

#### Rate Capacity 量程

	L	L1	L2	L3	W	W1	H	T
kg/mm								
3-60	130	80	12	106	30	15	22	M6
lb/inches(conversion of above dimensions 由以上尺寸转换)								
6.6-132.3	5.12	3.15	0.47	4.17	1.18	0.59	0.87	M6

### 技术参数 SPECIFICATIONS

Full Scale Output 灵敏度输出	$2.0 \pm 10\%mV/V$	Recommended Excitation 使用电压	10V(15V Maximmm)
Zero Balance 零点输出	$\pm 0.02mV/V$	Reference Max.Platform Size 最大秤台尺寸	400*400mm
Nonlinearity 非线性	$< \pm 0.017\%$	Insulation Resistance 绝缘阻抗	$> 2[50V DC]G\Omega$
Repeatability 重复性	$< \pm 0.017\%$	Nominal Temperature Range 工作温度	$-10^{\circ}C$ to $40^{\circ}C$ / $14^{\circ}F$ to $104^{\circ}F$
Hysteresis Error 滞后	$< \pm 0.017\%$	Safe Overload 安全过载	150% of full scale
Creep in 30 min 30分钟蠕变	$< \pm 0.008\% < \pm 0.012\%$	Breaking Overload 极限过载	300% of full scale
Creep in 2 min 2分钟蠕变	$< \pm 0.0033\% < \pm 0.005\%$	IP Rating 防护等级	IP66
Input Resistance 输入电阻	$415\Omega \pm 15$	Cable Color Code 颜色码	Exc(输入)+:Red(红);Exc(输入) -Black(黑);Sig(输出)+Green(绿); Sig(输出)-:Whit白 Shield Bare(屏蔽)
Outnput Resistance 输出电阻	$350\Omega \pm 3$		
Element Materia 材质	Aluminum 铝合金		

## 628A

### Special Features 特征

- ◆ 常温下，分度值可高达60,000
- ◆ 角差修正
- ◆ Ip66防护
- ◆ 适用于电子计价秤，计数秤等称重设备
- ◆ Up to 60,000 divisions shor term precision At romm temperature
- ◆ Off-center load compensated
- ◆ IP66 protection
- ◆ Suitable for price computer scale,counting Scale and weighing scales,etc.